

Pathways to Growth for Emerging Public Health Professionals

Brooke Ambrose
Idaho Department of Health and Welfare (IDHW)

Tia "Tee" Benally
Seven Directions, A Center for Indigenous Public Health

Malcolm Clay
Tacoma Pierce County Health Department

Emma Diffendal
Wahkiakum County

hot topics in practice www.nwcenterforpublichealth.com

Northwest Center
FOR PUBLIC HEALTH PRACTICE

1

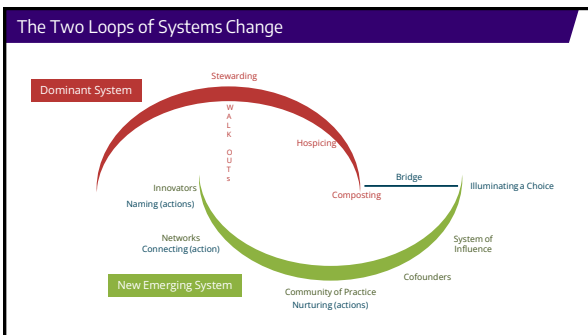
Thanks for Joining Us for our 20th Anniversary Webinar!

TOP FIVE Most Attended Sessions:

1. Addressing Racism and COVID-19
2. Navigating Misinformation for Community Health
3. Visually Communicating Public Health Data
4. AI in Public Health Today
5. A Model for Addressing Racism and Belonging

<p>First Session: PREPARING FOR SARS</p> <p>April 2004</p>	<p>Total Sessions To Date: 230</p>	<p>Total Viewer Connections: 28,502</p>
--	---	--

2



3

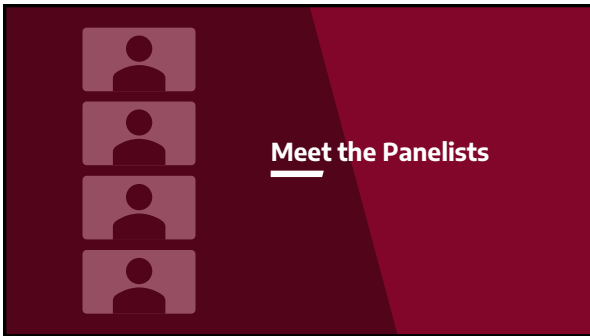
Question for the Viewers

?

Which of the following best describes your current public health career stage?


- A. Student**
- B. Young Professional**
less than 5 years in the public health workforce
- C. Mid-career**
5-10 years in the public health workforce
- D. Late-career**
10 or more years in the public health workforce
- E. Other**
please type in chat

4



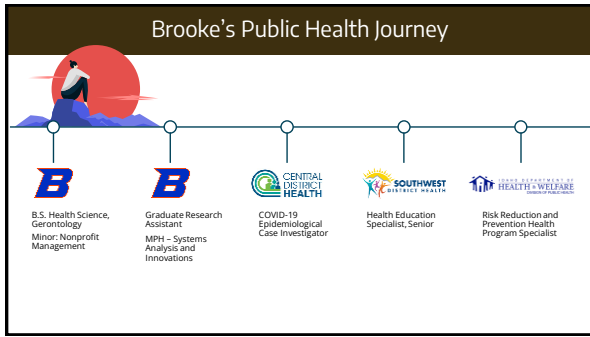
Meet the Panelists

5



Brooke Ambrose, MPH
Risk Reduction and Prevention Health Program Specialist
Idaho Department of Health and Welfare (IDHW)

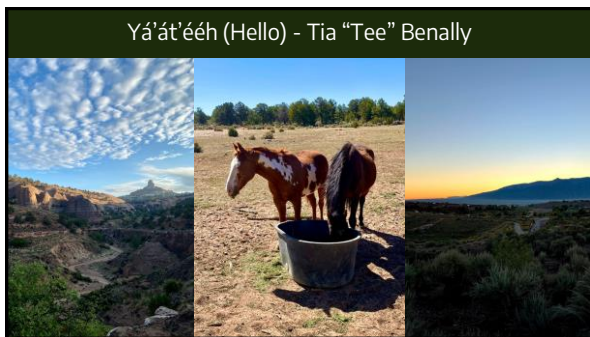
6



7



8



9



10



11



12



Malcolm Clay, BAS Community Health
Community Engagement Coordinator
Tacoma-Pierce County Health Department

13

Where Did You Start Your Public Health Journey?



In My Grandmother's Library



Pacific Lutheran University (Bioethics)
Tacoma Community College (Community Health)



At Tacoma-Pierce County Health Department



During the Pandemic, Like Many of You

14

What Have You Learned (Thus Far)?

- Intersectionality
- Lived experience
- Authenticity
- Accountability
- Make mistakes
- Use storytelling

15

How Would You Describe Your Public Health Journey Thus Far?

- Non-linear
- Introspective
- Heartwarming

16

Emma Diffendal, BS Public Health
Environmental Health Specialist
Wahkiakum County

17

Emma's Public Health Journey

- College-bound
 - Biology major?
 - Unsure of postgrad plans
 - Pandemic = better understanding
 - Job description for government job
- Moving time!
 - 5 months post-grad
 - Applied everywhere, in all government sectors
 - NEHA
- Wahkiakum County
 - 3 months in — expanding specialties
 - More rural area
 - What's next: More specializ.....

City of Edina

- Worked for Health Department
- Temporary
- Niche: Interest in RS certification

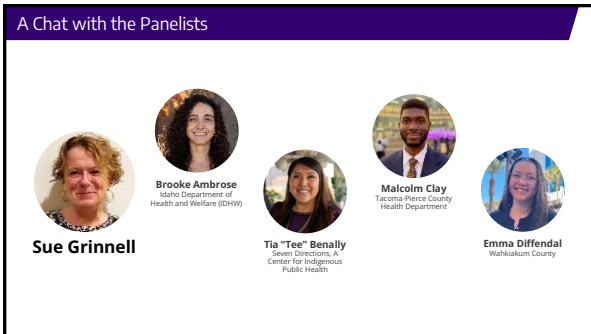
Cowlitz County

- Moved sight unseen
- Originally hired for School program
- Food program focus
- Better understanding of public health systems

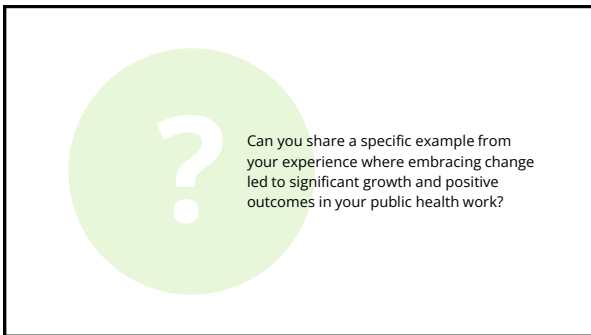
18



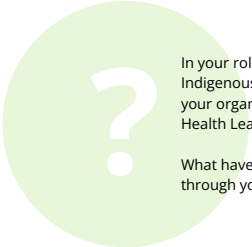
19



20




21



In your role, you work closely with Indigenous public health leaders through your organization's Indigenous Public Health Leaders training program.

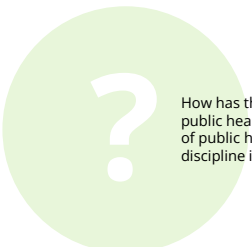
What have you learned about leadership through your experience?

22



What role, if any, has imposter syndrome played in your experience in the public health field?

23



How has the real-life practice of public health differed from the study of public health as an academic discipline in your experience so far?

24



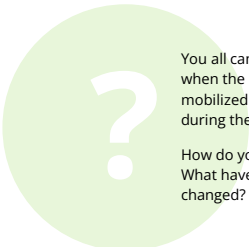
What excites you about working in public health today?

25



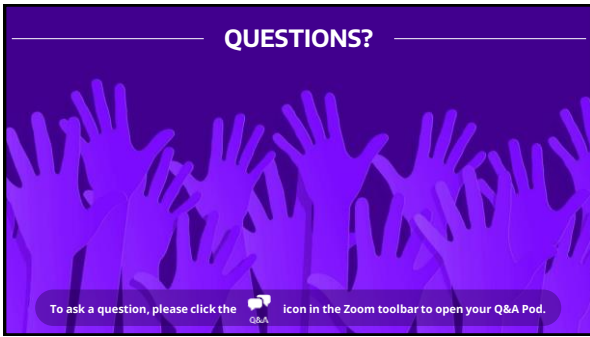
What role do diverse perspectives play in advancing your work in public health?

26



You all came of working age at a time when the public health system was mobilized and, in some cases, attacked during the COVID-19 pandemic.
How do you reflect on that experience? What have you noticed today that has changed?

27



28

Resources

Essentially Public Health
A three-part training series focusing on the foundations of public health and health equity.
<https://www.nwcp.org/training/essentially-public-health>

New Data and Dashboards: PH WINS Survey of Public Health Workers
A unique snapshot of the state and local government public health workforce.
<https://debeaumont.org/news/2022/new-data-and-dashboards/>

40 Under 40 in Public Health
A list recognizing equity-focused, service-oriented leaders in Public Health
<https://debeaumont.org/about-40-under-40/>

29