



**MAPP 2.0: A Framework for Community Health Improvement**

 **Seth Fritsch, MPH**  
Founder, Seth Fritsch Consulting

hot topics in practice [www.mhcc.org/center](http://www.mhcc.org/center) **Northwest Center FOR PUBLIC HEALTH PRACTICE**

1

---

---

---

---

---

---

---

---

**Question for the Viewers**

How would you describe the current state of your organization's community health improvement (CHI) efforts?

- A. Not yet started
- B. In the early stages of planning
- C. A plan is in place to implement CHI efforts
- D. Already engaged in implementing CHI efforts via services or programming
- E. Other (please type in chat)

2

---

---

---

---

---

---

---

---



**Meet MAPP 2.0**

- Phase 1: Build the CHI Foundation**
- Phase 2: Tell the Community Story**
- Phase 3: Continuously Build the Community**

3

---

---

---

---

---

---

---

---



4

---

---

---

---

---

---

---

---

Ceremony

“ I will tell you something about stories, [he said]  
They aren't just for entertainment.  
Don't be fooled  
They are all we have, you see,  
all we have to fight off illness and death.  
You don't have anything  
if you don't have the stories.  
Their evil is mighty  
but it can't stand up to our stories.  
So they try to destroy the stories  
let the stories be confused or forgotten  
They would like that  
They would be happy  
Because we would be defenseless then.  
- Leslie Marmon Silko

An aerial photograph of a landscape featuring rolling hills, a river, and mountains in the distance under a clear sky. The foreground shows dry, brownish grass, while the middle ground has green fields and a winding river. The background shows blue mountains under a light blue sky.

5

---

---

---

---

---

---

---

---



6

---

---

---

---

---

---

---

---

Community Health Assessment and Improvement are...

<b>What</b>	...ways to learn <b>from</b> the community what is important <b>to</b> the community...
<b>Why</b>	...to achieve equitable health outcomes...
<b>How</b>	...by activating and unlocking the collective power of individuals and institutions.

7

---

---

---

---


---

---

---

---

Benefits of MAPP 2.0



**The goal of MAPP is to achieve health equity**

- Improved community health outcomes
- Enhanced collaboration and partnership between community organizations
- Better allocation of resources to address priority health issues
- Increased community engagement and ownership of health initiatives
- Long-term sustainability of health equity efforts

8

---

---

---

---





---

---

---

---

Comparing MAPP 1.0 and MAPP 2.0

MAPP 1.0	VS.	MAPP 2.0
Six Phases		Three Phases
Four Assessments		Three Assessments
Goal: Improve population health		Goal: Achieve health equity
Health Equity Supplement		Power Primer Supplement

Adapted from MAPP 2.0 Overview Asynchronous Training, MACCHO 2023

9

---

---

---

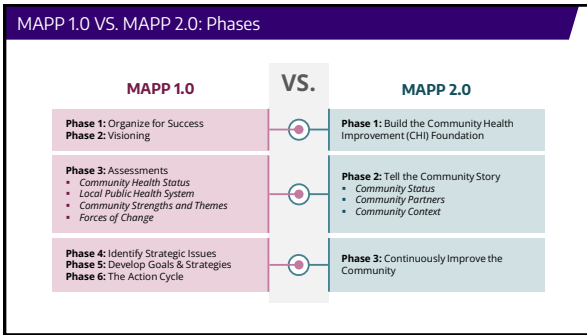
---

---

---

---

---



10

---

---

---

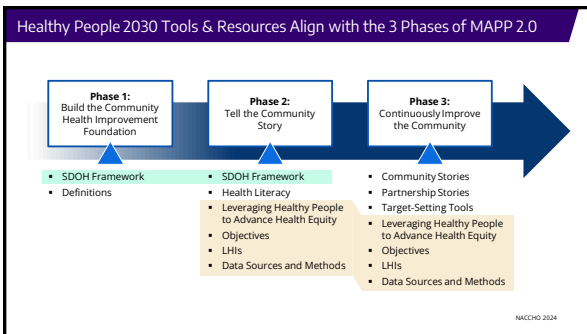
---

---

---

---

---



11

---

---

---

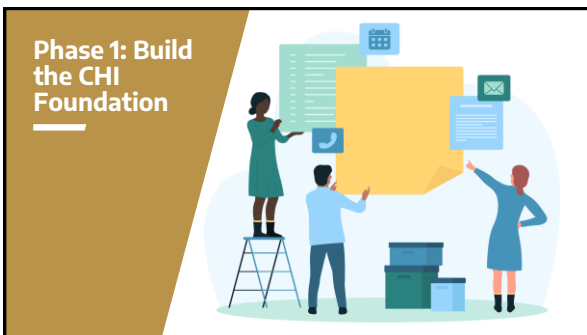
---

---

---

---

---



12

---

---

---

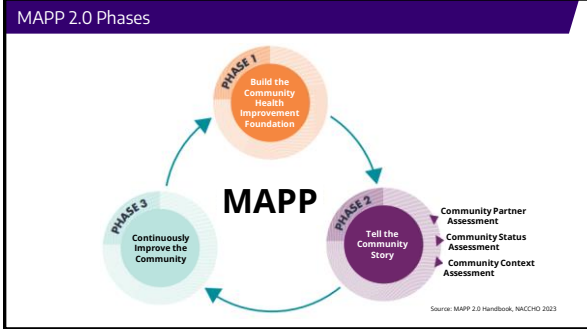
---

---

---

---

---




---

---

---

---

---

---

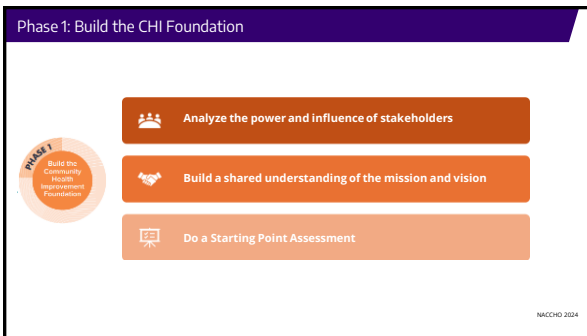
---

---

---

---

13




---

---

---

---

---

---

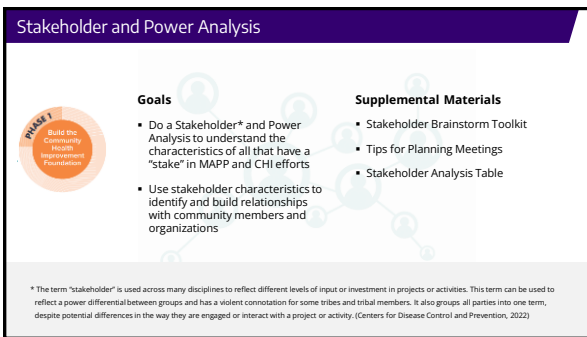
---

---

---

---

14




---

---

---

---

---

---

---


---

---

---

15

### Starting Point Assessment



**Goal**

The core group and steering committee reflect on the past cycle, identify resources available for the current cycle, and create goals for the current cycle.

**Topic Areas**

- Reflection on Last CHI Cycle
- Community Engagement
- Partnerships
- Data and Assessments
- Community Health Improvement Plan
- Leadership Support to Address Health Equity
- Resources, Skills, and Materials

---

---

---

---

---

---

---

---

---

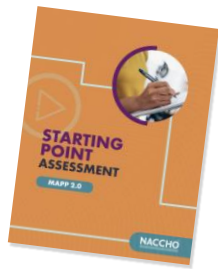
---

16

### Maricopa County Department of Public Health

**Reflection on past CHA/CHIP cycle:**

- Regional representation on the Steering Committee
- Health Equity Committee established to create a Health Equity Plan with measurements
- Sexual Orientation and Gender Identity Questions added



---

---

---

---

---

---

---

---

---

---

17

### Evolution of CHNA Data Collection in Maricopa County

	2012	2017	2019	2021	2023
Community survey	✓	✓	✓	✓	✓
Focus groups	✓	✓	✓	✓	✓
English & Spanish	✓	✓	✓	✓	✓
Paper format	✓	✓	✓	✓	✓
Grants for outreach		✓	✓	✓	✓
Virtual format			✓	✓	✓
Regional approach			✓	✓	✓
Additional languages				✓	✓
Live call line available					✓

Used with permission from MCDPH 2023

---

---

---

---

---

---

---

---

---

---

18



19

---

---

---

---


---

---

---

---

**Phase 2 Overview**



**Overview**

- Emphasizes the need for a complete, accurate, and timely understanding of community health and well-being across all sub-populations
- Guides the use of an array of views, ranging from health outcomes to root causes of those outcomes.

**Goals**

- Engage the community in developing a comprehensive and timely CH[N]A
- Identify the top population health priorities and health inequities in the community, including their root causes

NACCHO 2024

20

---

---

---

---


---

---

---

---

**Phase 2 Assessment Tools**



Community Partner Assessment	Community Status Assessment	Community Context Assessment
<p><b>Partners look at:</b></p> <ol style="list-style-type: none"> <li>their own systems, processes, and capacities</li> <li>their collective capacity as a network across all community partners to address health inequities.</li> </ol>	<p>Communities look beyond health behaviors and outcomes to see inequities in:</p> <ol style="list-style-type: none"> <li>the social determinants of health and</li> <li>systems of power, privilege, and oppression.</li> </ol>	<p><b>Gain unique insight from those directly impacted by social systems</b></p>

NACCHO 2024

21

---

---

---

---

---

---

---

---



22

---

---

---

---

---

---

---

---



23

---

---

---

---

---

---

---

---

Phase 3 Overview

**PHASE 3: Continuously Improve the Community**

**In collaboration with community...**

- Develop a 3-5 year CHIP
- Further define the vision established in Phase I
- Set priorities, coordinate actions, and target resources

**Goals**

- Identify strategic priorities for the CHIP
- Strategically align partner organizations to priority issues
- Develop shared measures to track CHIP activities
- Develop an action plan to achieve the community vision and MAPP goals
- Do continuous quality improvement on strategies as they are carried out

NACCHO 2024

24

---

---

---

---

---

---

---

---



**Community Improvement Strategies**

- Prioritize**: Prioritize Issues for the CHIP
- Analyze**: Do a Power Analysis of Each Issue
- Set Up**: Set Up Priority Issue Subcommittees
- Create**: Create Community Partner Profiles

NACCHO 2024

25

---

---

---

---

---

---

---

---

**Community Improvement Strategies**

- Develop**: Develop Shared Goals and Long-Term Measures
- Select**: Select CHIP Strategies
- Improve**: Continuous Quality Improvement Action Planning Cycles
- Monitor**: Monitor and Evaluate the CHIP

NACCHO 2024

26

---

---

---

---

---

---

---

---

**Addressing Power with the Power Primer**

**The Power Primer supplemental tool**

- Why & how to address power dynamics within MAPP
- Acknowledge power imbalances as a root cause of inequity
- Support building community power through MAPP and CHI

NACCHO 2024

27

---

---

---

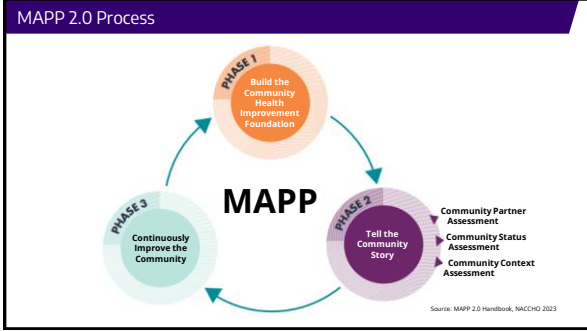
---

---

---

---

---



28

---

---

---

---

---

---

---

---

**Is MAPP Right for You?**

- ✓ Is health equity part of our vision?
- ✓ Are we interested in partnering with organizations across sectors?
- ✓ Are we committed to authentic community engagement?
- ✓ Can we dedicate the necessary time?

**NOTE:** If "No," you might use these questions to guide conversations about what is needed to prepare for a successful MAPP cycle.

NACCHO 2024

29

---

---

---

---

---

---

---

---

**Question for the Viewers**

Based on what you now know about the MAPP 2.0 framework, how strongly do you agree with the following statement:  
**MAPP 2.0 is a good fit for my organization at this time.**

- A. Strongly agree
- B. Agree
- C. Unsure
- D. Disagree
- E. Strongly disagree
- F. Other (please type in chat)

30

---

---

---

---

---

---

---

---

Key Takeaways

**MAPP 2.0**

- ✓ Community-driven strategic planning process
- ✓ Structure for communities to assess their most pressing population health issues
- ✓ Align resources across sectors for strategic action

---

---

---

---

---

---

---

---

31

A Chat with Seth Fritsch



Sue Grinnell



Seth Fritsch

---

---

---

---

---

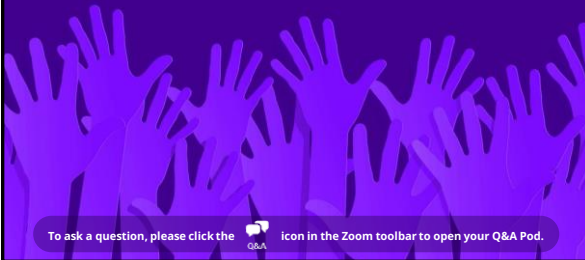
---

---

---

32

QUESTIONS?



To ask a question, please click the  icon in the Zoom toolbar to open your Q&A Pod.

---

---

---

---

---

---

---

---

33

**Resources**

**MAPP 2.0 Introduction**  
 NACCHO  
<https://www.naccho.org/uploads/card-images/public-health-infrastructure-and-systems/MAPP-2.0-Launch-V3.pdf>

**MAPP 2.0 Resources (Handbook, CHA Tools, Power Primer, Supplemental Tools)**  
 NACCHO  
<https://www.naccho.org/programs/public-health-infrastructure/performance-improvement/community-health-assessment/mapp>

**Is MAPP Right for You (Handout)**  
 Seth Fritsch Consulting (adapted from NACCHO 2.0 handbook)  
<https://drive.google.com/file/d/1WMyNlSaFj3a2YAgwlnNF7X68XwoKUMMd/view?usp=sharing>

34

---

---

---

---

---

---

---

---

**Thank you!**

Seth Fritsch, MPH  
[seth.fritsch@gmail.com](mailto:seth.fritsch@gmail.com)

35

---

---

---

---

---

---

---

---