

Advancing Data Modernization in Washington State

Michelle Campbell, MSHI
 Director
 Data Modernization and Informatics
 Washington State Department of Health

Janet Baseman, PhD, MPH
 Professor
 Department of Epidemiology
 University of Washington School of Public Health

hot topics in practice
www.wahealthcare.gov

Northwest Center
 FOR PUBLIC HEALTH PRACTICE

1

Question for the Viewers

How would you describe your familiarity with the CDC's data modernization initiative?

- A. Very familiar
- B. Somewhat familiar
- C. Not familiar
- D. Other (type in chat)

2

Data Modernization Initiative: An Overview

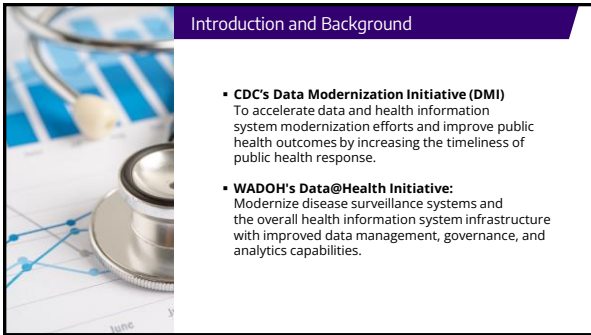
Findings and Recommendations

Where to Begin: Actions and Next Steps

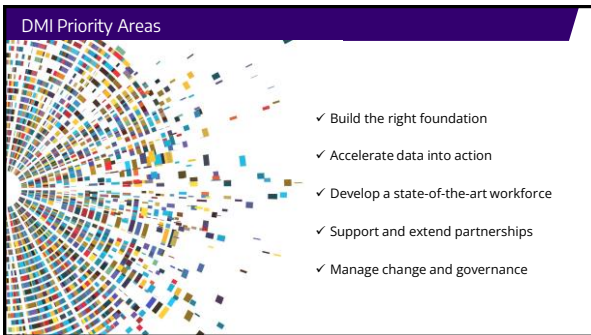
3




4



5



6



How it Started

- WADOH Completed **Public Health DMI Assessment in Fall 2021**
- CDC requested additional/clarifying information
- WADOH asked University of Washington/Northwest Center for Public Health Practice to assist with CDC request

7

The Expanded DMI Assessment


- UW expanded on the original DMI assessment survey to focus on data infrastructure, systems, and workforce
- UW conducted a comprehensive assessment across WA including a sample of LHJs
 - **Purpose: to learn more about workforce training needs as they relate to DMI goals and objectives**
 - Developed semi-structured interview guide
 - Perceptions on interactions with DOH systems
 - Workforce needs and capacity-building
 - Training priorities to support data modernizations
- 30 staff at DOH and 38 staff from 13 LHJs participated in interviews

8



Findings and Recommendations

9




Gap Analysis

Gaps were identified as instances where state and local key respondents identified resources, infrastructure, or processes that did not align with or support the CDC DMI priority objectives

Gap Analysis Protocol:

- Understand the current state of surveillance systems
- Capture insights and recommendations from users to define the desired end state
- Conduct gap analysis to reveal differences between the current and desired states
- Develop recommendations to close identified gaps & prioritize next steps

10

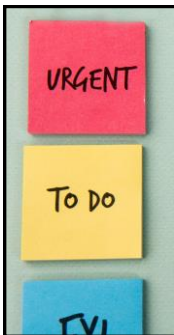


Gap Analysis – Overall Findings

To progress toward DMI goals we need:

- Improved interoperability and break down of unnecessary data silos
- Reduced burden on end users to move data into action
- Adequate staffing, training, and workforce support to tackle burnout
- Meaningful engagement between DOH and LHJs
- To prioritize communication, change management, and governance

11



Priorities

- DMI strategy and governance
- Laboratory data exchange
- Cloud analytics
- Data visualization
- Partner engagement
- Data governance and data democratization

12

Workforce Development and Training Recommendations



- Develop a workforce development plan
- Establish business processes and organizational structure to support workforce development plan.
- Identify a DMI workforce development lead.
- Implement a robust data science training program
- Prioritize existing training resources to fill well-known training gaps
- Develop a DMI training and workforce development communications strategy.

13

Question for the Viewers

Which of the following would you consider the highest priority for you/your organization?

- A. Improved interoperability and break down of unnecessary data silos
- B. Reduced burden on end users to move data into action
- C. Adequate staffing, training, and workforce support to tackle burnout
- D. Meaningful engagement between DOH and LHJs
- E. To prioritize communication, change management, and governance
- F. Not sure
- G. Other (type in chat)

14

Where to Begin: Actions and Next Steps



15

Training Plan



Key Competencies Considered

- de Beaumont Foundation's Public Health Strategic Skills
- CDC DMI Competencies
- Proposed UW Curriculum for Applied Data Science in Public Health

Learning Framework and Plan

- Public Health Learning Agenda Framework
- Focused on Impact Level 1 (learning for knowledge change)

16

Short-Term Training Activities



Three-part Webinar Series Pilot:

- **Part 1:** Introductory overview of data science and its application in public health practice
- **Part 2:** LHJ data science case study
- **Part 3:** DOH data science case study

Curate Existing Training Materials

17

Introduction to Data Science for Public Health




- 3-part webinar series pilot
- Topic areas determined via discussion with DOH
- Sessions included topic presentation and Q&A session
- Post-session and post-series evaluations

18


Curated Training Resources



- 📄 Justice, Equity, Diversity, and Inclusion
- 📄 Strategic Communications
- 📄 Change Management
- 📄 Public Health Basics
- 📄 Systems Thinking
- 📄 Technical Data Skills

19

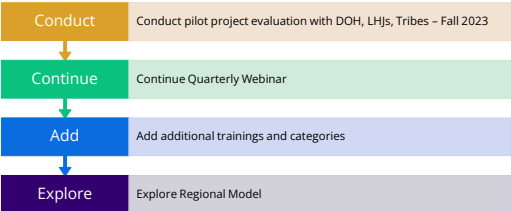
Public Health Data Learning Center Website



- Design and build a public-facing website for the Public Health Data Learning Center
- Determine website requirements → Build and launch website → Evaluation

20

Next Steps



```

graph TD
  A[Conduct] --> B[Continue]
  B --> C[Add]
  C --> D[Explore]
  
```

- Conduct** Conduct pilot project evaluation with DOH, LHJs, Tribes – Fall 2023
- Continue** Continue Quarterly Webinar
- Add** Add additional trainings and categories
- Explore** Explore Regional Model

21

Key Takeaways

- To successfully implement data modernization, we must invest in people, processes, and technology.
- Communication and collaboration between DOH and LHJs and other partners are critical to identifying priorities for data modernization.
- Workforce development priorities identified by DOH and LHJ participants include effective communications, systems thinking, leadership skills, and improving policy knowledge.

22

A Chat with Janet Baseman and Michelle Campbell



Sue Grinnell



Janet Baseman



Michelle Campbell

23

QUESTIONS?



24

Resources

- CDC Data Modernization Initiative
<https://www.cdc.gov/surveillance/data-modernization/index.html>
- WA DOH Data Modernization Initiative Project Planning
<https://doh.wa.gov/data-modernization-initiative-project-planning>
- Public Health Data Learning Center Website
www.phdatalearn.uw.edu
