



Public Health, This is Your Shot!



Jaime Bodden, MPH, MSW

Managing Director
Washington State Association of
Local Public Health Officials



Question for the Viewers



How would you rate your understanding of the factors influencing local public health decision-making?

- A. High level
- B. Moderate level
- C. Low level
- D. Other (please type in chat)

Governance Profile: Washington State



Political Waters



Into the Unknown

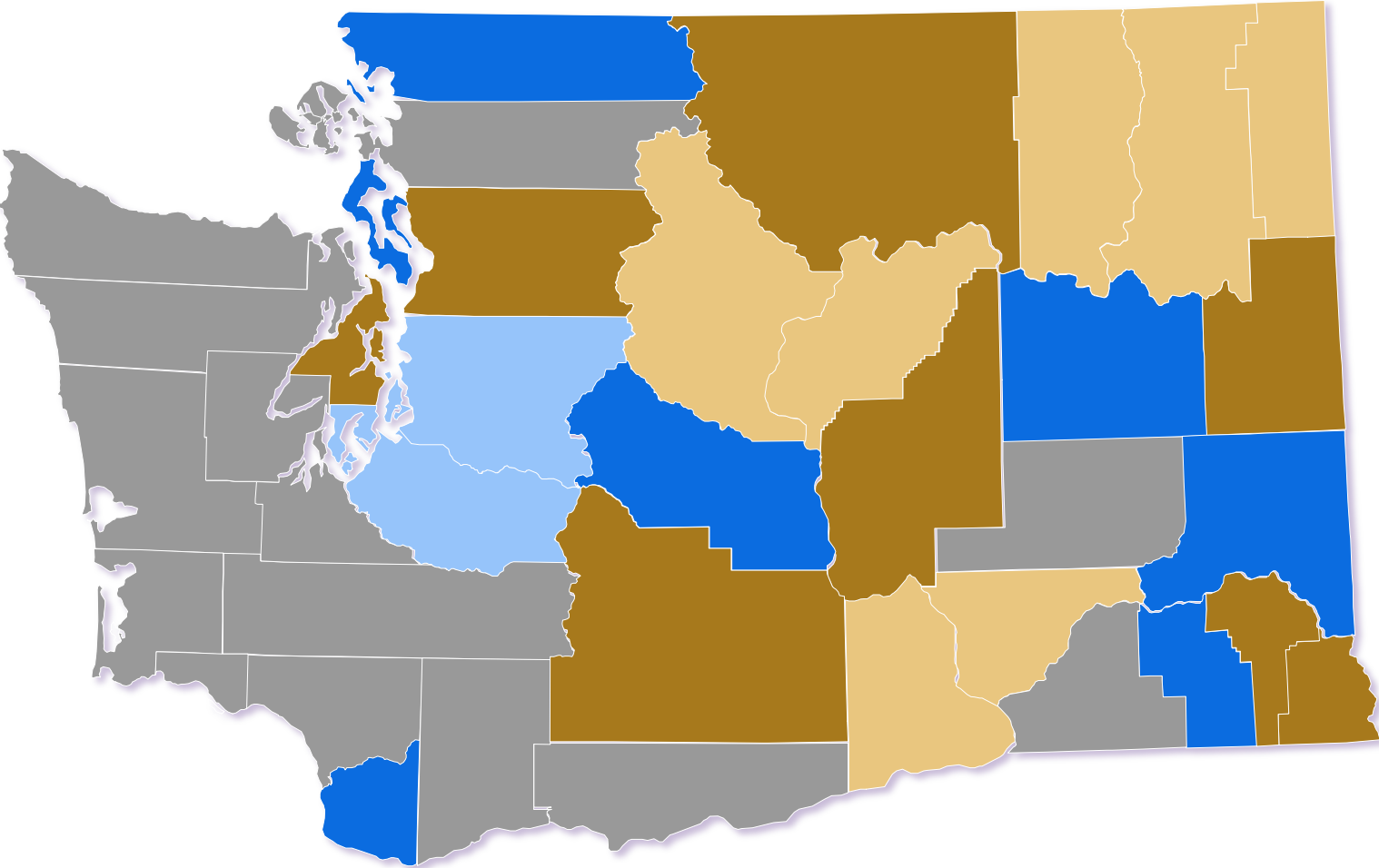


Governance Profile: Washington State



Local Health Jurisdictions in Washington State

- County Health & Human Services
- County Health Department
- City-County Health Department
- Multi-County Health District
- Single County Health District



Drivers of LHJ Work



- Laws (RCW) passed by the Washington State Legislature
- Rules (WAC) by state agencies (i.e. WA State Board of Health, DOH)
- Federal block grant focus and needs
- Local needs and priorities (CHA/CHIP)
- Categorical funding via competitive grants

Working with Local Officials

Administrators and Health Officers

- Provide oversight to staff
- Implement programs and services
- Conduct reporting requirements
- Issue health orders on PH emergencies and hazards
- Enforce state laws

Local Boards of Health

- Appoint local health officer
- Establish local fees
- Set department budget
- Promote health and safety
- Participate in health improvement planning

Working at the County Level

General County Operations

- Emergency operations
- Elected official as Board of County Commissioners and Local Boards of Health
- Other county functions
 - **Examples:** Isolation and quarantine; PPE procurement

General Local Boards of Health and Local Health Jurisdictions

- Support local state of emergency
- Approve response budgets
 - Direct resources to specific tasks
- Approve and support local restrictions
 - **Example:** Ordinances on transient accommodations
- Provide public information

Specific LHJ COVID-19 Response Efforts



- ✓ Case Investigations and contact tracing
- ✓ Testing coordination, logistics
- ✓ Vaccine distribution and coordination
- ✓ Care coordination



Challenges and Considerations

- Balancing roles in local decision-making
- Communication and transparency



Political Waters



Navigating Department Work

What influences and steers local public health decisions?



Science and Process

- Local data
- Evidence-based and promising practices
- Research institutions

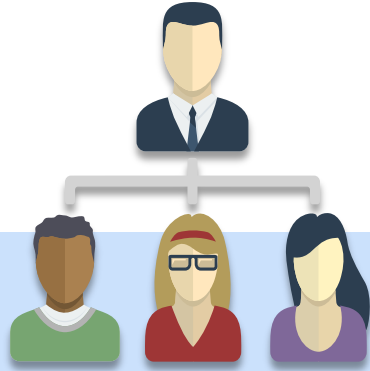


Social Politics

- Local contexts and culture
- Political majority priorities
- Economics
- Historical structures

Collaborating with Your Community Crew

What influences and steers local public health decisions?



Enhancing Capacity

- Hiring staff from the community
- Looking at diverse skillsets
- Mentoring and succession planning



Leveraging System Partners

- Sharing decision-making
- Access to core services and programs



Forging Community Connections

- Strengthening community resiliency and supports
- Participatory, community driven work

Into the Unknown



Question for the Viewers

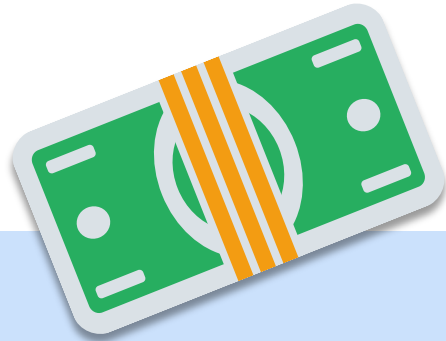


*Do you agree with the following statement?
“In my agency, we are well-prepared for upcoming
pandemic challenges, like the vaccination rollout.”*

- A. Yes
- B. No
- C. I'm not sure

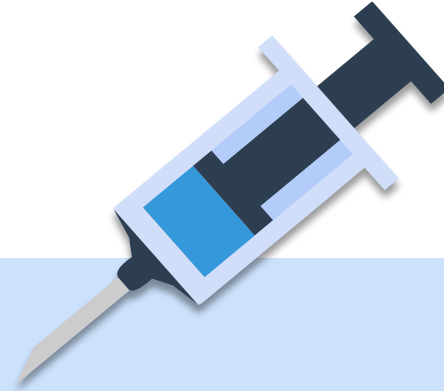
NOTE: If you answered “**Yes**”, please share your strategies or resources in the chat box.

Upcoming Pandemic Challenges



Funding

- Ongoing support for critical emergency functions
- Coordinating and maximizing federal and state support



Vaccination

- Administration and distribution
- Promotion and education



Second Pandemic

- Diseases of despair
- Community resiliency and recovery

Pandemic and Long-Term Priorities

Foundational Public Health Services

- Stability and capacity
 - Modernization
 - Stable and secure funding
-

Public Health Issues Facing Communities

- Determinants of health
 - Local contexts and nuances
 - Community-driven initiatives
-

Washington State's 2021 Legislative Session



Upcoming Policies:

- Emergency powers
 - **Example:** SB 5114
- Public health governance
 - **Examples:** SB 5173, HB1152
- Public health funding
 - **Examples:** SB 5149, HB 1201

Strategies for Addressing Local and State Policies

- ✓ **Holding clear principles**
 - Consistent application of principles to proposals
- ✓ **Building and maintaining relationships**
 - Community partners
 - Policymakers
 - Agency partners
- ✓ **Participating actively in shaping policy**



A Chat with Jaime Bodden



Allene Mares



Jaime Bodden

QUESTIONS?

To ask a question, please click the



icon in the Zoom toolbar to open your Q&A Pod.

Centers for Disease Control and Prevention

Health Department Governance

<https://www.cdc.gov/publichealthgateway/sitesgovernance/index.html>

Health Affairs

No Longer Invisible: The Critical Role of Health Departments in Responding to COVID-19
(Article by Erika Martin and Jessica Kronstadt)

<https://www.healthaffairs.org/doi/10.1377/hblog20200408.106373/full/>

National Association of Local Boards of Health

Governance Resources

<https://www.nalboh.org/page/GovernanceResources>

Trust for America's Health

The Impact of Chronic Underfunding on America's Public Health System:
Trends, Risks, and Recommendations, 2020 (Report)

<https://www.tfah.org/report-details/publichealthfunding2020/>